

Lot 2

5.5 rooms



The surfaces and furnishings shown on the plans are for guidance only and are in no way contractual. The architects and the DT reserve the right to make changes to the plans, insofar as these are required by technical, architectural or legal imperatives.

Garden Level



Lot 2
5.5 rooms



Bedrooms

4

Bathrooms

3

Living Area
185,7 m²

Terrace Area
84,2 m²

Garden Area
245,0 m²

Net Sales Area
239,7 m²

Parking
2 spaces

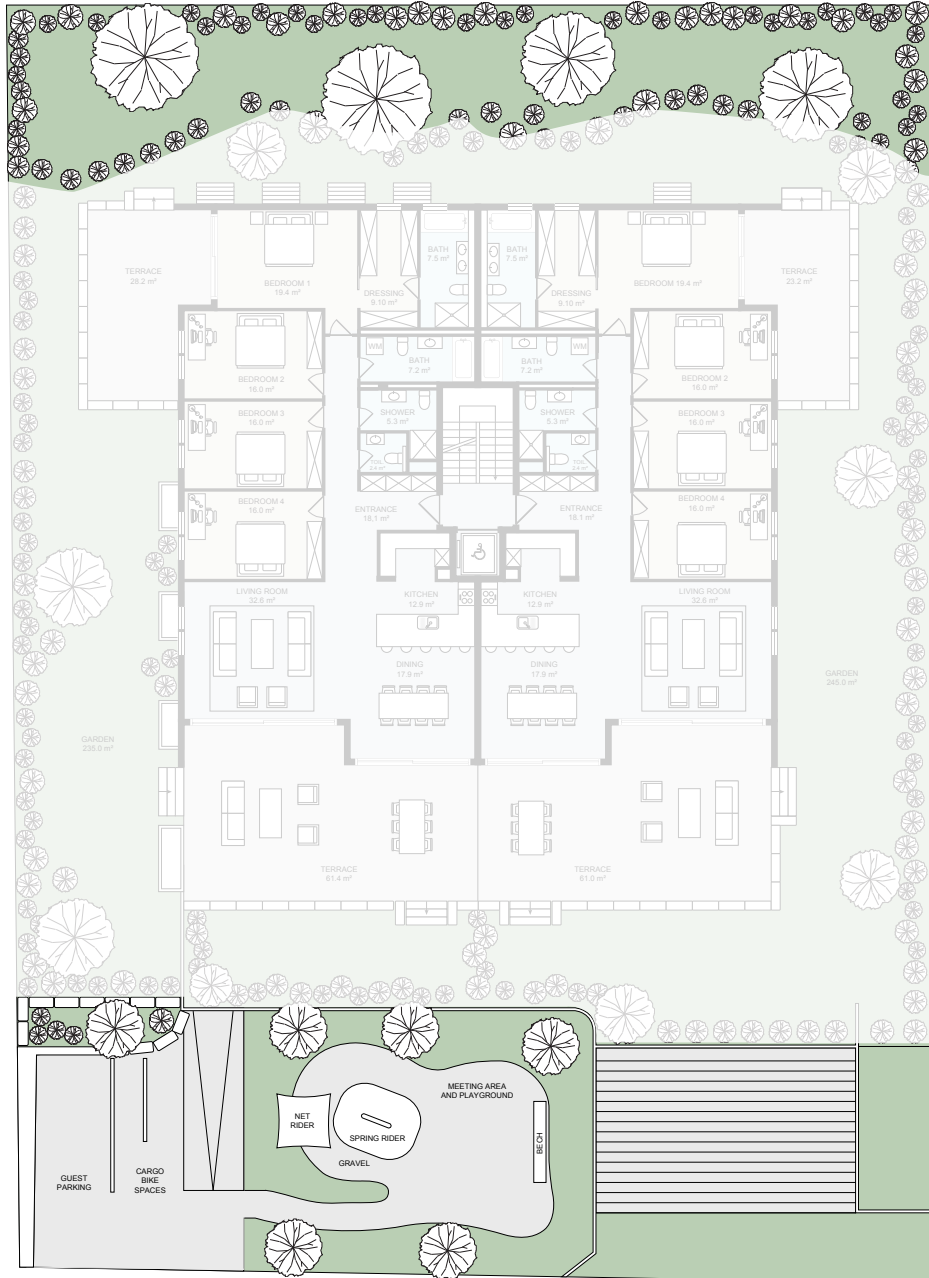


The surfaces and furnishings shown on the plans are for guidance only and are in no way contractual. The architects and the DT reserve the right to make changes to the plans, insofar as these are required by technical, architectural or legal imperatives.

Common Areas



Lot 2
5.5 rooms



Bedrooms

4

Bathrooms

3

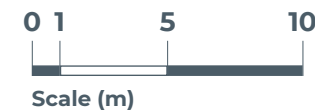
Living Area
185,7 m²

Terrace Area
84,2 m²

Garden Area
245,0 m²

Net Sales Area
239,7 m²

Parking
2 spaces



The surfaces and furnishings shown on the plans are for guidance only and are in no way contractual. The architects and the DT reserve the right to make changes to the plans, insofar as these are required by technical, architectural or legal imperatives.

Basement



Lot 2
5.5 rooms



Bedrooms

4

Bathrooms

3

Living Area
185,7 m²

Terrace Area
84,2 m²

Garden Area
245,0 m²

Net Sales Area
239,7 m²

Parking
2 spaces

The surfaces and furnishings shown on the plans are for guidance only and are in no way contractual. The architects and the DT reserve the right to make changes to the plans, insofar as these are required by technical, architectural or legal imperatives.



The surfaces and furnishings shown on the plans are for guidance only and are in no way contractual. The architects and the DT reserve the right to make changes to the plans, insofar as these are required by technical, architectural or legal imperatives.